



## Small Signal Diodes

1N4148WS, 1N4448WS,  
1N914BWS

### Features

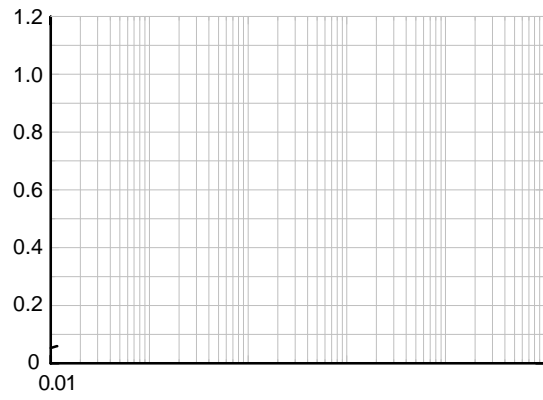
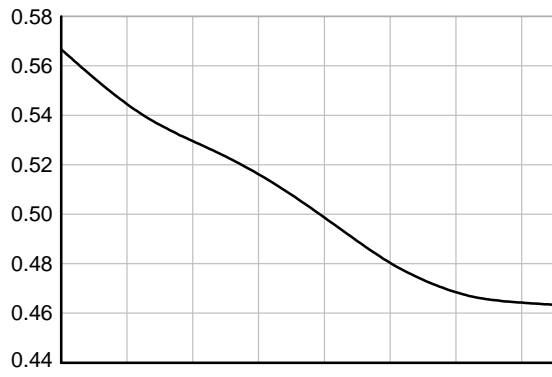
- General Purpose Diodes
- Fast Switching Device ( $T_{RR} < 4.0$  ns)
- Very Small and Thin SMD Package
- Moisture Level Sensitivity 1
- Matte Tin (Sn) Lead Finish
- Green Mold Compound
- These Devices are Pb-Free and are RoHS Compliant

### ABSOLUTE MAXIMUM RATINGS

Parameter	Symbol
-----------	--------

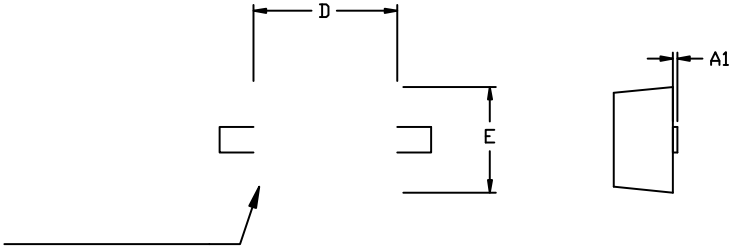
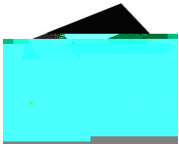
# 1N4148WS, 1N4448WS, 1N914BWS

## TYPICAL CHARACTERISTICS



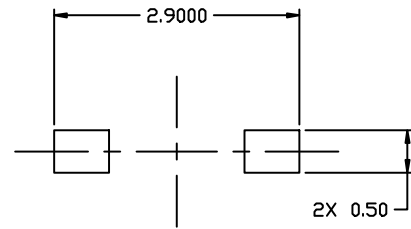
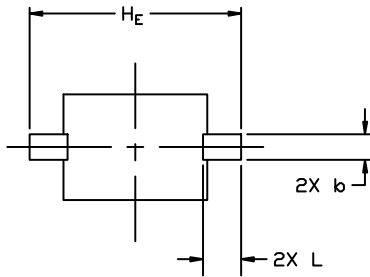
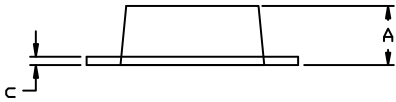


SOD 323FL



1. DIMENSIONING AND TOLERANCING PER ASME
2. CONTROLLING DIMENSION: MILLIMETERS
3. LEAD THICKNESS MARK onsemi
4. DIMENSIONS D AND E DO NOT INCLUDE MOLDED onsemi

MILLIMETERS	
DIM	MIN.
	0



**onsemi**, **onsemi**, and other names, marks, and brands are registered and/or common law trademarks of Semiconductor Components Industries, LLC dba "**onsemi**" or its affiliates and/or subsidiaries in the United States and/or other countries. **onsemi** owns the rights to a number of patents, trademarks, copyrights, trade secrets, and other intellectual property. A listing of **onsemi**'s product/patent coverage may be accessed at [www.onsemi.com/site/pdf/Patent-Marking.pdf](http://www.onsemi.com/site/pdf/Patent-Marking.pdf). **onsemi** reserves the right to make changes at any time to any products or information herein, without notice. The information herein is provided "as-is" and **onsemi** makes no warranty, representation or guarantee regarding the accuracy of the information, product features, availability, functionality, or suitability of its products for any particular purpose, nor does **onsemi** assume any liability arising out of the application or use of any product or circuit, and specifically disclaims any and all liability, including without limitation special, consequential or incidental damages. Buyer is responsible for its products and applications using **onsemi**

---

---