

N-Channel JFET

15 V, 10 to 20 mA, 38 mS, CP

2SK2394

Features

- Large $|y_{fs}|$
- Small C_{iss}
- Small-Sized Package Permitting 2SK2394–Applied Sets to be Made Small Slim
- Ultralow Noise Figure
- This is a Pb-Free Device

Applications

- AM Tuner RF Amplifier
- Low-Noise Amplifier

ABSOLUTE MAXIMUM RATINGS at $T_A = 25^\circ\text{C}$

Symbol	Parameter	Value	Unit
V_{DSX}			

2SK2394

ELECTRICAL CHARACTERISTICS at $T_A = 25^\circ\text{C}$

Symbol	Parameter	Test Conditions	Ratings			Unit
			Min	Typ	Max	
$V_{(BR)GDS}$	Gate-to-Drain Breakdown Voltage	$I_G = -10 \mu\text{A}$, $V_{DS} = 0 \text{ V}$	-15	-	-	V
I_{GSS}	Gate Cutoff Current	$V_{GS} = -10 \text{ V}$, $V_{DS} = 0 \text{ V}$	-	-	-1.0	nA
$V_{GS(off)}$	Cutoff Voltage	$V_{DS} = 5 \text{ V}$, $I_D = 100 \mu\text{A}$	-0.3	-0.7	-1.0	V
I_{DSS}	Drain Current	$V_{DS} = 5 \text{ V}$, $V_{GS} = 0 \text{ V}$	10	-	20	mA

yfs/5.83.887 .907 8 491.0.oer 2co165 ttm(yfs)TJET59.754 61G6p1 re984 635.1874 Tm00efTJET9c5 .90850.3812 Tm00efTJF4 1 ref113.556h9 645.165

TYPICAL CHARACTERISTICS

Figure 1. $I_D - V_{DS}$

Figure 2. $I_D - V_{DS}$

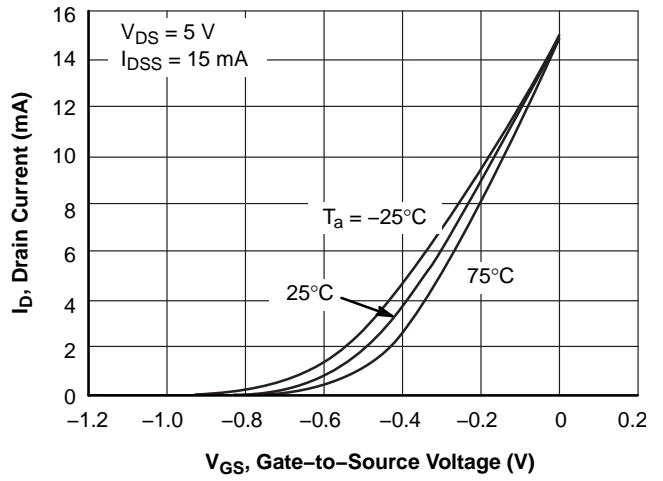
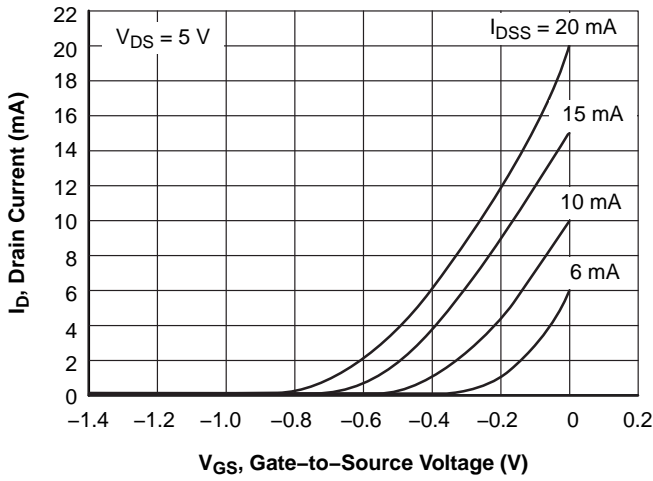


Figure 3. $I_D - V_{GS}$

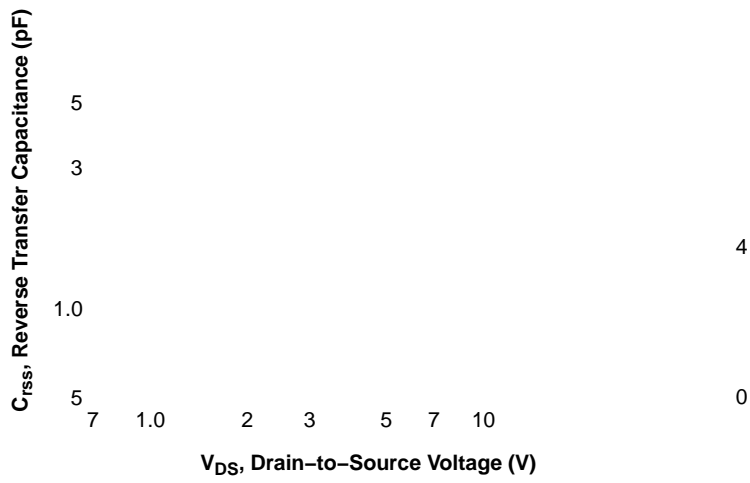
Figure 4. $I_D - V_{GS}$

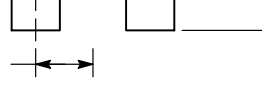
2SK2394

TYPICAL CHARACTERISTICS (continued)

Figure 7. $V_{GS(off)} - I_{DSS}$

Figure 8. $C_{iss} - V_{DS}$

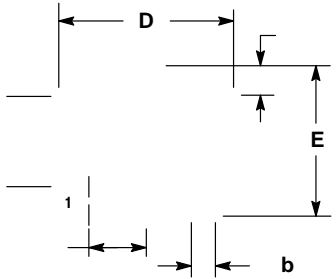




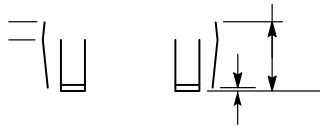
SC-59 / CP3



1



MILLIMETERS		
DIM	MIN	MAX
A		



onsemi, **onsemi**, and other names, marks, and brands are registered and/or common law trademarks of Semiconductor Components Industries, LLC dba "**onsemi**" or its affiliates and/or subsidiaries in the United States and/or other countries. **onsemi** owns the rights to a number of patents, trademarks, copyrights, trade secrets, and other intellectual property. A listing of **onsemi**'s product/patent coverage may be accessed at www.onsemi.com/site/pdf/Patent-Marking.pdf. **onsemi** reserves the right to make changes at any time to any products or information herein, without notice. The information herein is provided "as-is" and **onsemi** makes no warranty, representation or guarantee regarding the accuracy of the information, product features, availability, functionality, or suitability of its products for any particular purpose, nor does **onsemi** assume any liability arising out of the application or use of any product or circuit, and specifically disclaims any and all liability, including without limitation special, consequential or incidental damages. Buyer is responsible for its products and applications using **onsemi**
