



## 2SK3557

### ELECTRICAL CHARACTERISTICS (at Ta = 25°C)

Parameter	Symbol	Conditions	Ratings			Unit
			Min	Typ	Max	
Gate-to-Drain Breakdown Voltage	$V_{(BR)GDS}$	$I_G = -10 \mu A, V_{DS} = 0 V$	-15	-	-	V
Gate Cutoff Current	$I_{GSS}$	$V_{GS} = -10 V, V_{DS} = 0 V$	-	-	-1.0	nA
Cutoff Voltage	$V_{GS(off)}$	$V_{DS} = 5 V, I_D = 100 \mu A$	-0.3	-0.7	-1.5	V
Drain Current	$I_{DSS}$	$V_{DS} = 5 V, V_{GS} = 0 V$	10*	-	32*	mA
Forward Transfer Admittance	$ y_{fs} $	$V_{DS} = 5 V, V_{GS} = 0 V, f = 1 kHz$	24	35	-	mS
Input Capacitance	$C_{iss}$	$V_{DS} = 5 V, V_{GS} = 0 V, f = 1 MHz$	-	10.0	-	pF
Reverse Transfer Capacitance	$C_{rss}$	$V_{DS} = 5 V, V_{GS} = 0 V, f = 1 MHz$	-	2.9	-	pF
Noise Figure	NF	$V_{DS} = 5 V, R_g = 1 k\Omega, I_D = 1 mA, f = 1 kHz$	-	1.0	-	dB

Product parametric performance is indicated in the Electrical Characteristics for the listed test conditions, unless otherwise noted. Product performance may vary from the values indicated in the Electrical Characteristics due to manufacturing tolerances.

2SK3557



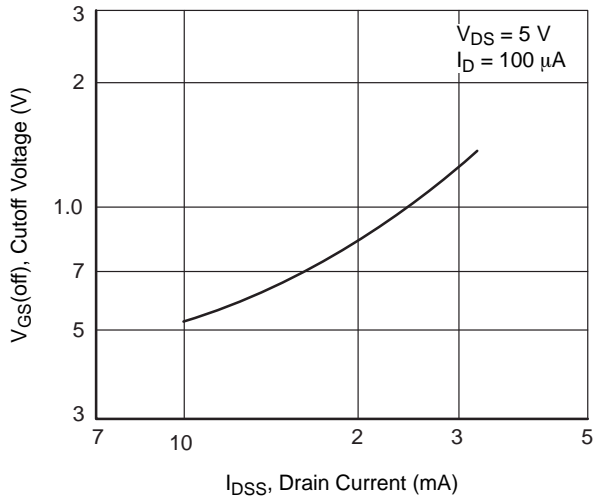


Figure 7.  $V_{GS(off)} - I_{DSS}$

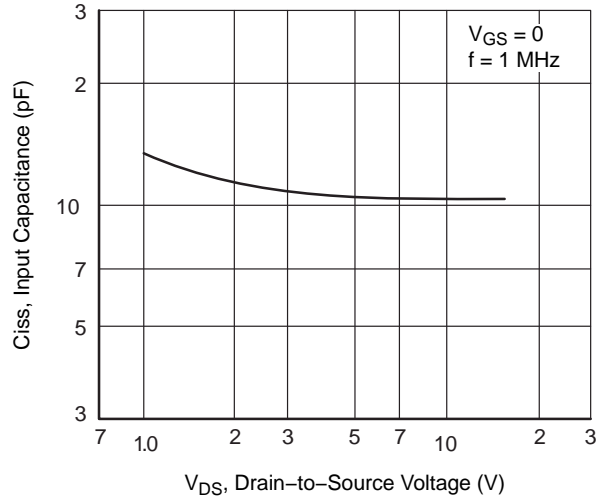


Figure 8.  $C_{iss} - V_{DS}$

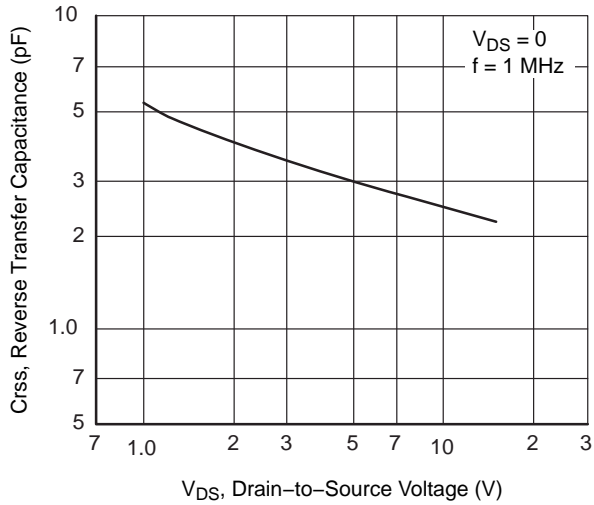


Figure 9.  $C_{rss} - V_{DS}$

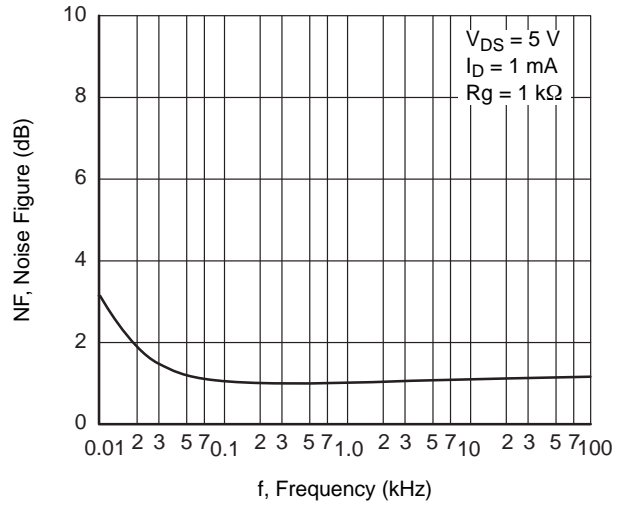


Figure 10.  $NF - f$

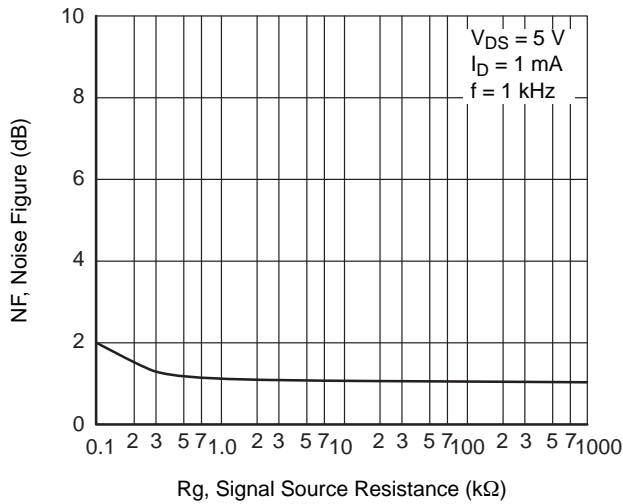


Figure 11.  $NF - R_g$

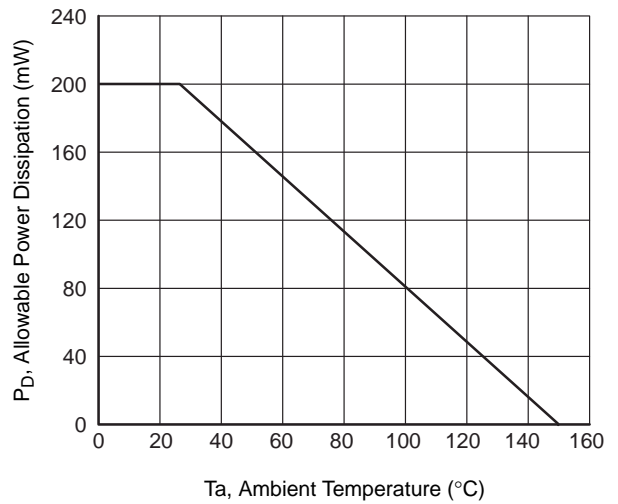
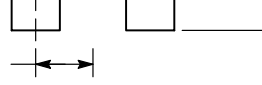


Figure 12.  $P_D - T_a$

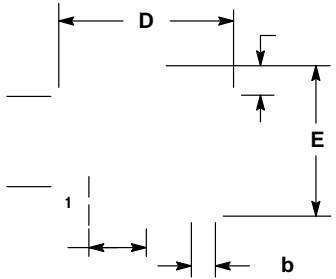




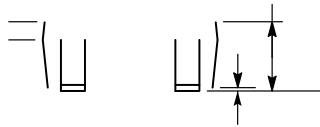
SC-59 / CP3



1



MILLIMETERS		
DIM	MIN	MAX
A		



**onsemi**, **onsemi**, and other names, marks, and brands are registered and/or common law trademarks of Semiconductor Components Industries, LLC dba "**onsemi**" or its affiliates and/or subsidiaries in the United States and/or other countries. **onsemi** owns the rights to a number of patents, trademarks, copyrights, trade secrets, and other intellectual property. A listing of **onsemi**'s product/patent coverage may be accessed at [www.onsemi.com/site/pdf/Patent-Marking.pdf](http://www.onsemi.com/site/pdf/Patent-Marking.pdf). **onsemi** reserves the right to make changes at any time to any products or information herein, without notice. The information herein is provided "as-is" and **onsemi** makes no warranty, representation or guarantee regarding the accuracy of the information, product features, availability, functionality, or suitability of its products for any particular purpose, nor does **onsemi** assume any liability arising out of the application or use of any product or circuit, and specifically disclaims any and all liability, including without limitation special, consequential or incidental damages. Buyer is responsible for its products and applications using **onsemi**

---

---