

4N25M, 4N26M, 4N27M, 4N28M, 4N35M, 4N36M, 4N37M

SAFETY AND INSULATION RATINGS

--

Parameter		Characteristics

Symbol	Parameter	Value	Unit
	--		
	--		

4N25M, 4N26M, 4N27M, 4N28M, 4N35M, 4N36M, 4N37M

ABSOLUTE MAXIMUM RATINGS

Symbol	Parameter	Max	Unit
--------	-----------	-----	------

4N25M, 4N26M, 4N27M, 4N28M, 4N35M, 4N36M, 4N37M

ELECTRICAL CHARACTERISTICS INDIVIDUAL COMPONENT CHARACTERISTICS

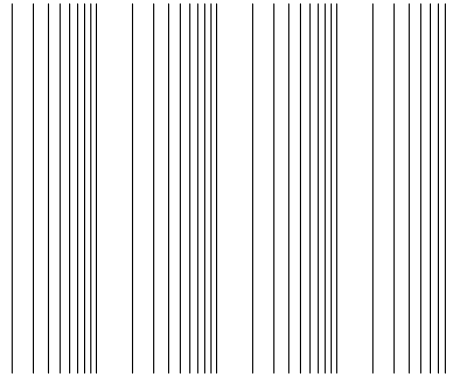
Symbol	Parameter	Test Conditions	Min	Typ	Max	Unit
EMITTER						
			-			
			-			μ

DETECTOR

4N25M, 4N26M, 4N27M, 4N28M, 4N35M, 4N36M, 4N37M

4N25M, 4N26M, 4N27M, 4N28M, 4N35M, 4N36M, 4N37M

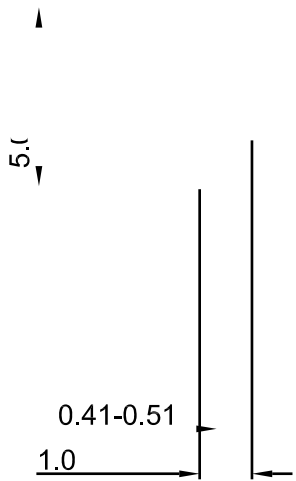
TYPICAL PERFORMANCE CURVES



4N25M, 4N26M, 4N27M, 4N28M, 4N35M, 4N36M, 4N37M

ORDERING INFORMATION

Part Number	Package	Shipping
	-	
	-	
	-	
	- - -	
	- - -	
	- - -	
	- - -	

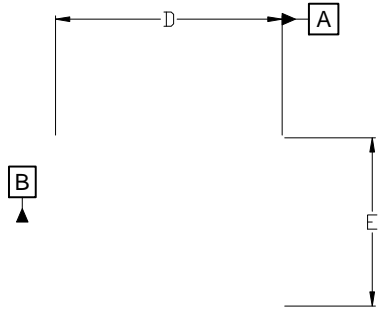


SE

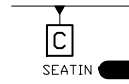


PDIP6 8.51x6.35, 2.54P
CASE 646BY
ISSUE A

DATE 15 JUL 2019



TOP VIEW



ALL DIMENSIONS ARE IN MILLIMETERS.
C) DIM ■

onsemi, **onsemi**, and other names, marks, and brands are registered and/or common law trademarks of Semiconductor Components Industries, LLC dba "**onsemi**" or its affiliates and/or subsidiaries in the United States and/or other countries. **onsemi** owns the rights to a number of patents, trademarks, copyrights, trade secrets, and other intellectual property. A listing of **onsemi**'s product/patent coverage may be accessed at www.onsemi.com/site/pdf/Patent-Marking.pdf. **onsemi** reserves the right to make changes at any time to any products or information herein, without notice. The information herein is provided "as-is" and **onsemi** makes no warranty, representation or guarantee regarding the accuracy of the information, product features, availability, functionality, or suitability of its products for any particular purpose, nor does **onsemi** assume any liability arising out of the application or use of any product or circuit, and specifically disclaims any and all liability, including without limitation special, consequential or incidental damages. Buyer is responsible for its products and applications using **onsemi**
