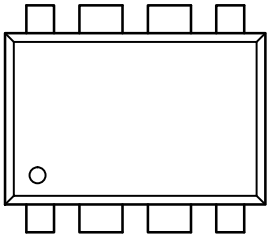


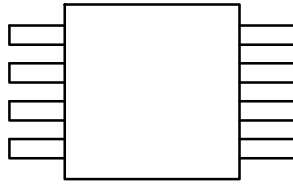
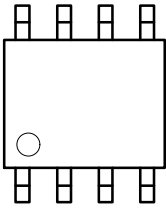
CAT5111

100 tap Digital Potentiometer (POT) with Buffered Wiper

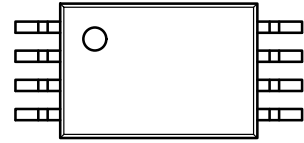
The CAT5111 is a single digital POT designed as an electronic replacement for mechanical potentiometers. Ideal for automated



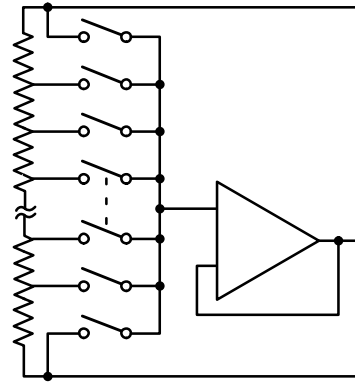
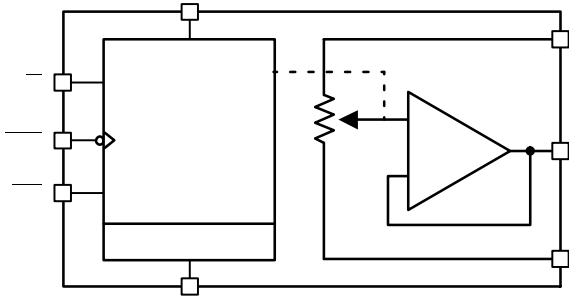
Ω Ω Ω



Ω Ω Ω

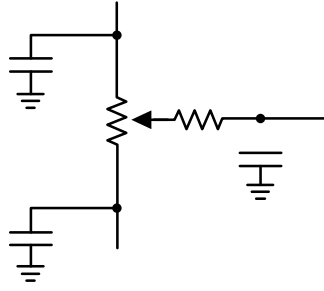


Ω Ω Ω



— Increment Control Input

The \overline{INC} input (on the falling edge) moves the wiper in the



--	--	--	--	--	--	--

						μ
						μ
						μ
						μ
						μ

						μ
					-	μ

	---		-	-	
	---		-	-	
	---		-	-	
	---		-	-	
	---		-	-	
	---		-	-	
	---		-	-	μ
	---		-	-	
	---		-	-	
	---	-			μ
	---		-	-	μ
	---	-	-		μ

-

