



PDIP4 GW
CASE 709AH



FOD814, FOD817

FUNCTIONAL BLOCK DIAGRAM

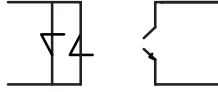


Figure 1. Schematic – FOD814

FOD814, FOD817

ABSOLUTE MAXIMUM RATINGS ◦

Symbol	Parameter	Value		Unit
		FOD814	FOD817	

EMITTER

		±		
	◦			◦

DETECTOR

	-			
	-			
	◦			◦

ELECTRICAL CHARACTERISTICS ◦

FOD814, FOD817

ELECTRICAL CHARACTERISTICS

AC TRANSFER CHARACTERISTICS

Symbol	Parameter	Device	Test Conditions	Min	Typ	Max	Unit
	-		Ω -			-	
			Ω	-			μ
				-			

ISOLATION CHARACTERISTICS

Symbol	Parameter	Device	Test Conditions	Min	Typ	Max	Unit
	-		$- \leq \mu$		-	-	
			-			-	Ω
			-	-			

TYPICAL ELECTRICAL/OPTICAL CHARACTERISTICS CURVES

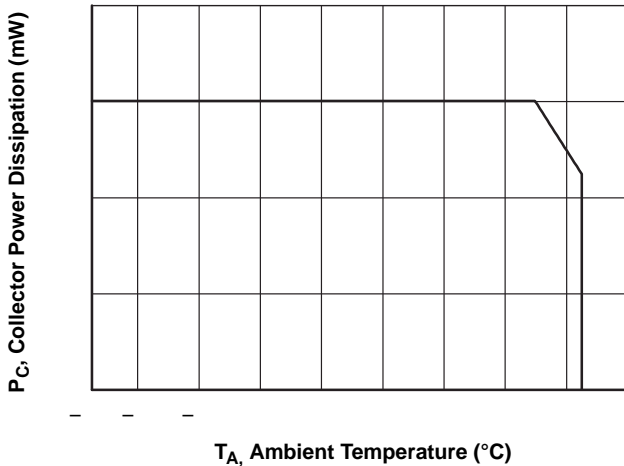


Figure 3. Collector Power Dissipation vs. Ambient Temperature (FOD814)

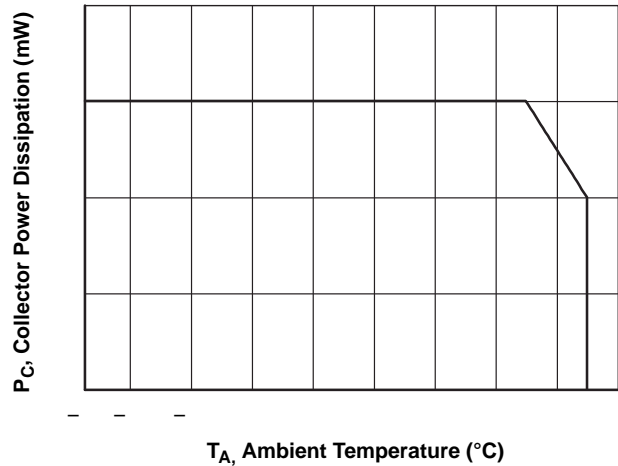


Figure 4. Collector Power Dissipation vs. Ambient Temperature (FOD817)

TYPICAL ELECTRICAL/OPTICAL CHARACTERISTICS CURVES

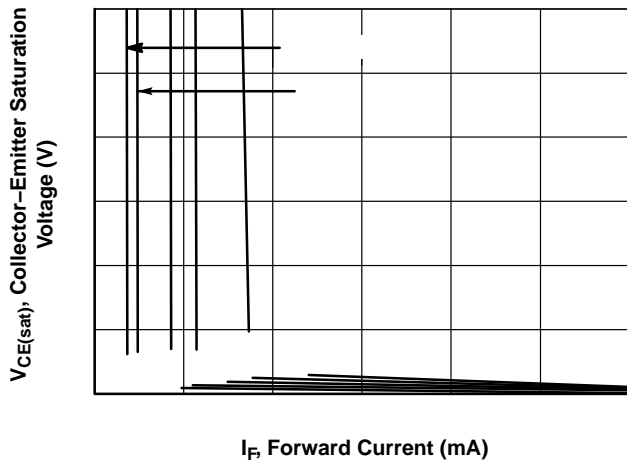


Figure 5. Collector-Emitter Saturation Voltage vs. Forward Current

I_F Forward Current (mA)

V_F Forward Voltage (V)

Figure 6. Forward Current vs. Forward Voltage (FOD814)

TYPICAL ELECTRICAL/OPTICAL CHARACTERISTICS CURVES

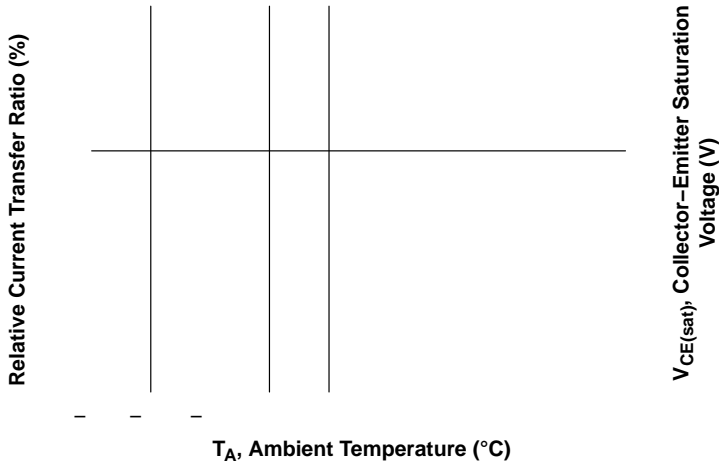


Figure 11. Relative Current Transfer Ratio vs. Ambient Temperature



Figure 12. Collector-Emitter Saturation Voltage vs. Ambient Temperature

FOD814, FOD817

TYPICAL ELECTRICAL/OPTICAL CHARACTERISTICS CURVES

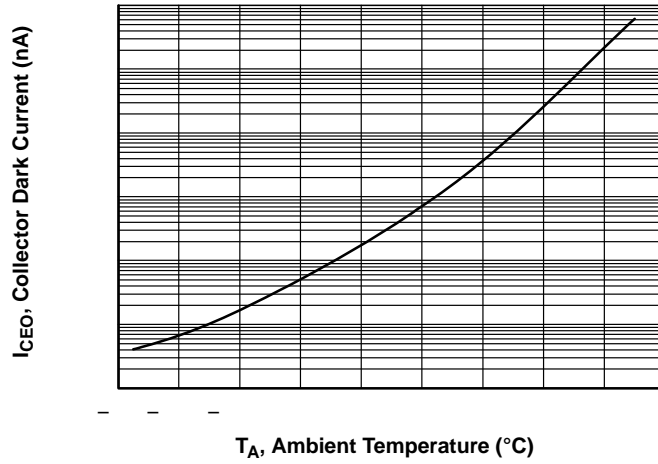
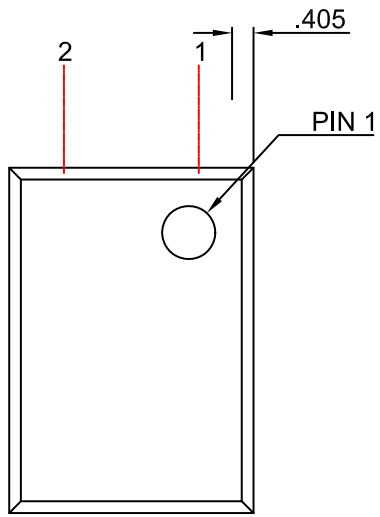
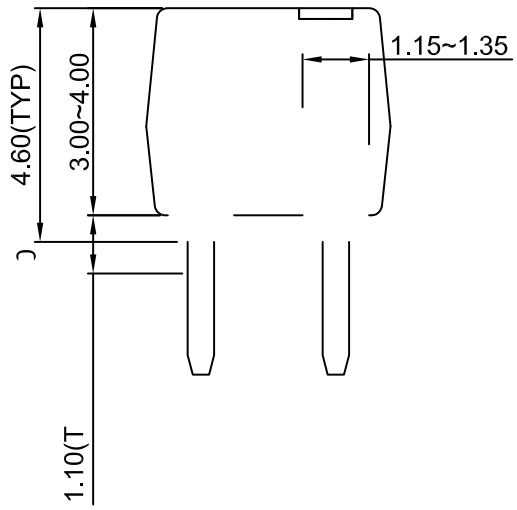


Figure 17. Collector Dark Current vs. Ambient Temperature

PDIP4 4.6x6.5, 2.54P



NO



PDIP4 4.6x6.5, 2.54P
CASE 646CD
ISSUE O

DATE 31 JUL 2016

NOTES:



onsemi, **onsemi**, and other names, marks, and brands are registered and/or common law trademarks of Semiconductor Components Industries, LLC dba "**onsemi**" or its affiliates and/or subsidiaries in the United States and/or other countries. **onsemi** owns the rights to a number of patents, trademarks, copyrights, trade secrets, and other intellectual property. A listing of **onsemi**'s product/patent coverage may be accessed at www.onsemi.com/site/pdf/Patent-Marking.pdf. **onsemi** reserves the right to make changes at any time to any products or information herein, without notice. The information herein is provided "as-is" and **onsemi** makes no warranty, representation or guarantee regarding the accuracy of the information, product features, availability, functionality, or suitability of its products for any particular purpose, nor does **onsemi** assume any liability arising out of the application or use of any product or circuit, and specifically disclaims any and all liability, including without limitation special, consequential or incidental damages. Buyer is responsible for its products and applications using **onsemi**
