



# MMSZxxxT1G Series, SZMMSZxxxT1G Series

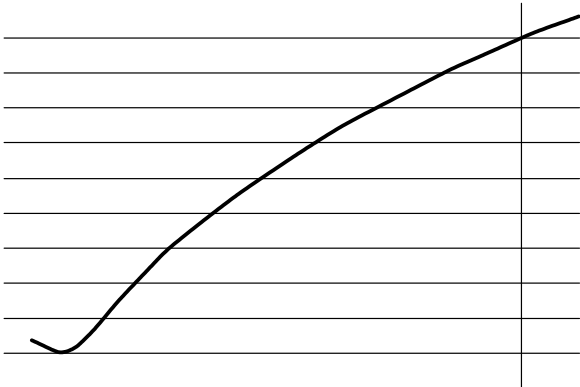
## MMSZxxxT1G Series, SZMMSZxxxT1G Series

**ELECTRICAL CHARACTERISTICS** ( $T_A = 25^\circ\text{C}$  unless otherwise noted,  $V_F = 0.9\text{ V Max.}$  @  $I_F = 10\text{ mA}$ )

Device*	Device Marking	V <sub>Z1</sub> (Volts) (Notes 6 and 7)			Z <sub>ZT1</sub> (Note 8)	V <sub>Z2</sub> (Volts) (Notes 6 and 7)		Z <sub>ZT2</sub> (Note 8)	Max Reverse Leakage Current	
		@ I <sub>ZT1</sub> = 2 mA				@ I <sub>ZT2</sub> = 0.1 mA		@ I <sub>ZT2</sub> = 0.5 mA	I <sub>R</sub> @ V <sub>R</sub>	
		Min	Nom	Max	Ω	Min	Max	Ω	μA	Volts
MMSZ27T1G/T3G	Y1	25.65	27	28.35	80	25	28.9	300	0.05	18.9
MMSZ30T1G	Y2	28.50	30	31.50	80	27.8	32	300	0.05	21
MMSZ33T1G	Y3	31.35	33	34.65	80	30.8	35	325	0.05	23.1
MMSZ36T1G	Y4	34.20	36	37.80	90	33.8	38	350	0.05	25.2
MMSZ39T1G	Y5	37.05	39	40.95	130	36.7	41	350	0.05	27.3
MMSZ43T1G	Z1	40.85	43	45.15	150	39.7	46	375	0.05	

MMSZxxxT1G Series, SZMMSZxxxT1G Series

TYPICAL CHARACTERISTICS



# MMSZxxxT1G Series, SZMMSZxxxT1G Series

## TYPICAL CHARACTERISTICS

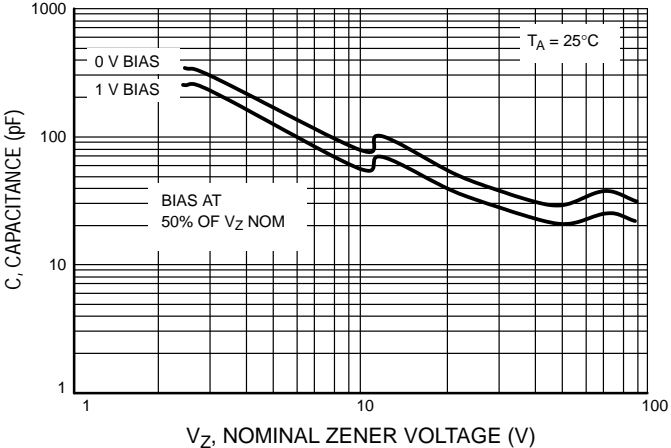
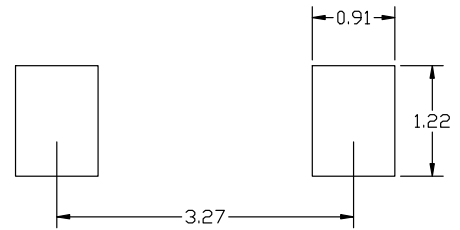
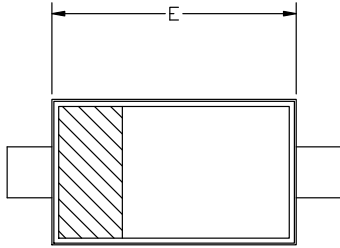


Figure 7. Typical Capacitance



**SOD-123 2-LEAD, 1.60x2.69x1.16**  
CASE 425  
ISSUE H

DATE 29 FEB 2024



**GENERIC  
MARKING DIAGRAM\***



- XXX = Specific Device Code
- M = Date Code
- = Pb-Free Package

(Note: Microdot may be in either location)

\*This information is generic. Please refer to device data sheet for actual part marking. Pb-Free indicator, "G" or microdot "▪", may or may not be present. Some products may not follow the Generic Marking.

STYLE 1:  
PIN 1. CATHODE  
2. ANODE

**onsemi**, **onsemi**, and other names, marks, and brands are registered and/or common law trademarks of Semiconductor Components Industries, LLC dba "**onsemi**" or its affiliates and/or subsidiaries in the United States and/or other countries. **onsemi** owns the rights to a number of patents, trademarks, copyrights, trade secrets, and other intellectual property. A listing of **onsemi**'s product/patent coverage may be accessed at [www.onsemi.com/site/pdf/Patent-Marking.pdf](http://www.onsemi.com/site/pdf/Patent-Marking.pdf). **onsemi** reserves the right to make changes at any time to any products or information herein, without notice. The information herein is provided "as-is" and **onsemi** makes no warranty, representation or guarantee regarding the accuracy of the information, product features, availability, functionality, or suitability of its products for any particular purpose, nor does **onsemi** assume any liability arising out of the application or use of any product or circuit, and specifically disclaims any and all liability, including without limitation special, consequential or incidental damages. Buyer is responsible for its products and applications using **onsemi**

---

---