
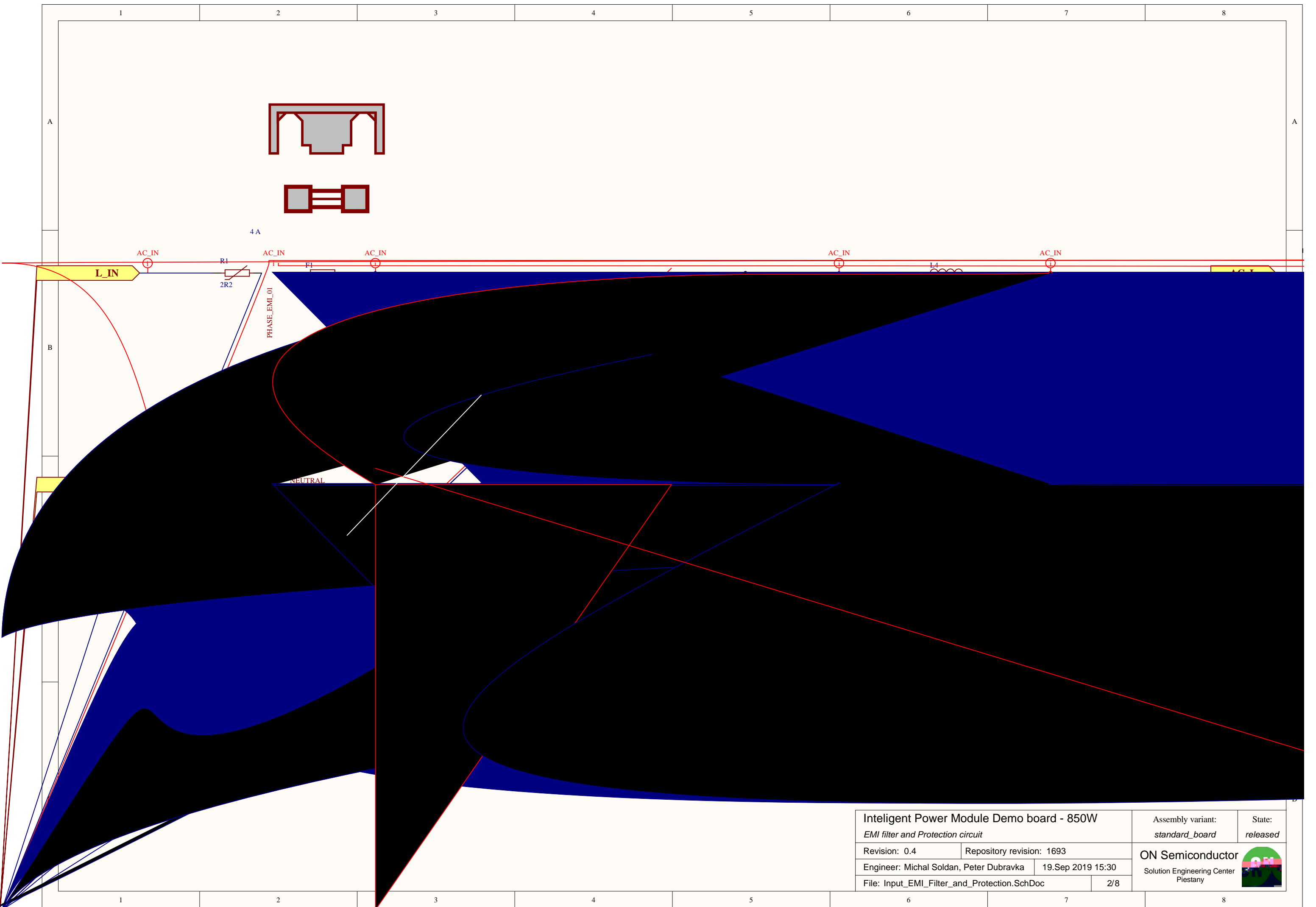


Intelligent Power Module Demo board - 850W		Assembly variant:	State:
Top level		standard_board	released
Revision: 0.4	Repository revision: 1693		 ON Semiconductor Solution Engineering Center Piešťany
Engineer: Michal Soldan, Peter Dubravka	19.Sep 2019 15:30		
File: IPM_board_top.SchDoc	1/8		



Intelligent Power Module Demo board - 850W
EMI filter and Protection circuit

Assembly variant:
standard_board

State:
released

Revision: 0.4 Repository revision: 1693

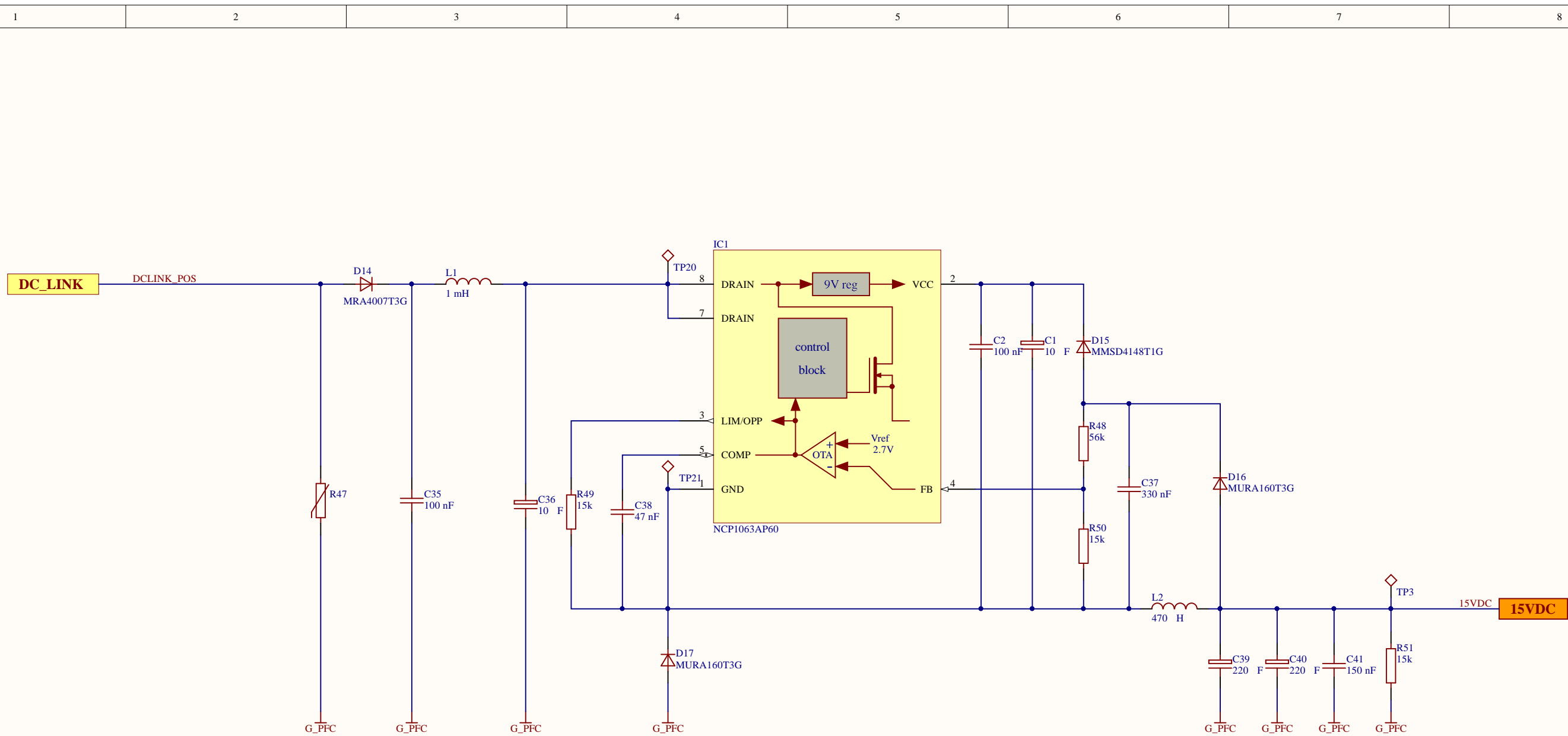
Engineer: Michal Soldan, Peter Dubravka 19.Sep 2019 15:30

File: Input_EMI_Filter_and_Protection.SchDoc 2/8

ON Semiconductor
 Solution Engineering Center
 Piešťany



	1	2	3	4	5	6	7	8
A								
B								
C								
D								



Intelligent Power Module Demo board - 850W DC/DC Power supply 390VDC / 15VDC		Assembly variant: <i>standard_board</i>	State: <i>released</i>
Revision: 0.4	Repository revision: 1693		ON Semiconductor Solution Engineering Center Piešťany
Engineer: Michal Soldan		19.Sep 2019 15:30	
File: DC_Source_15V.SchDoc		4/8	



1

2

3

4

5

6

7

8

A

A

B

B

C


C

D

D

Engineer: Michal Soldan, Peter Dubravka	
File: Current_measurement.SchDoc	6/8

ON Semiconductor
Solution Engineering Center



1

2

3

4

5

6

7

8

1

2

3

4

5

6

7

8

A

A

B

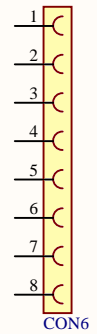
B

C

C

D

D



Intelligent Power Module Demo board - 850W		Assembly variant:	State:
<i>Arduino due headers</i>		<i>standard_board</i>	<i>released</i>
Revision: 0.4	Repository revision: 1693		ON Semiconductor Solution Engineering Center Piešťany
Engineer: Michal Soldan, Peter Dubravka	19.Sep 2019 15:30		
File: Control_board.SchDoc	7/8		



1

2

3

4

5

6

7

8

1

2

3

4

5

6

7

8

A

A

B

B

C

C

D

D



1

2

3

4

5

6

7

8