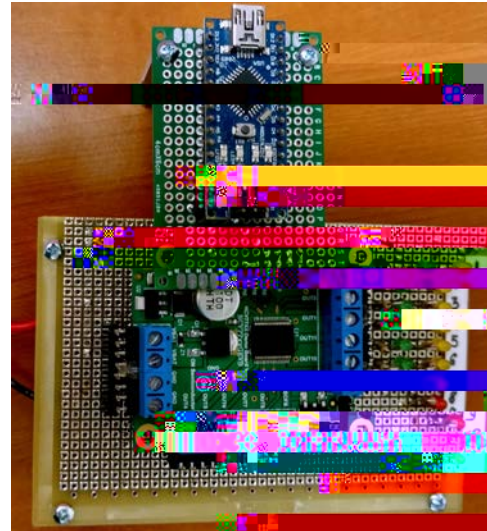
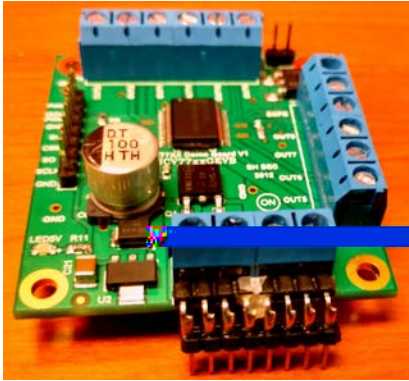


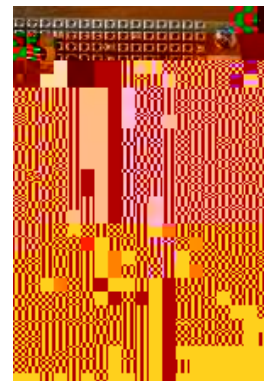
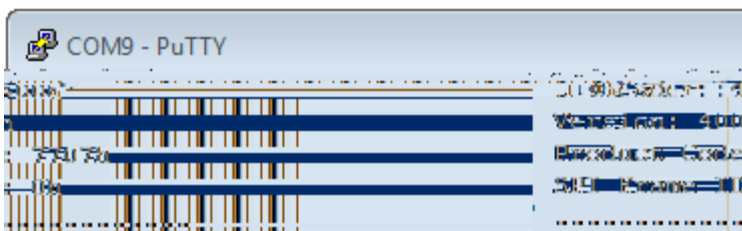
Test Procedure for the NCV77XXGEVB Evaluation Board



1. Attach the connectors on the NCV77XX board output terminals.
2. Plug the module in on the board.
3. Mount the Arduino board on the NCV77XXGEVB.
4. Attach the USB Cable to Arduino board and make sure the USB drivers are installed.
5. Apply power 12V.
6. Open a Serial Terminal like PUTTY.exe with baudrate of 38400 and select the device's COM port.

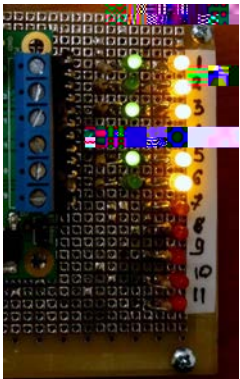
NOTE: Using Serial Terminal is not a mandatory part for testing the board. Testing can be done by just looking at the output LED patterns

7. As the terminal opens the microcontroller will reset itself and loop through the program as follows:
 - a. Read the device information from NCV77XXGEVB and display it on the Serial terminal. All the outputs are in high impedance mode, thus both LEDs Green and Yellow for each output with half bridge (Outputs 1,2,3,4,5 and 6) will be lit.

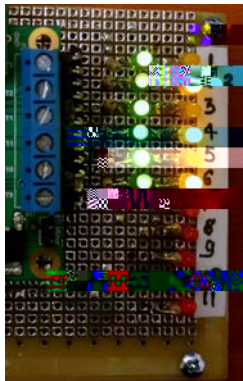


b. Ena

```
.....  
High Side Drive  
Outputs: 1, 3, 5  
.....
```



```
.....  
Low Side Drive  
Outputs: 1, 3, 5  
.....  
High Side Drive  
Outputs: 2, 4, 6  
.....
```



e.

