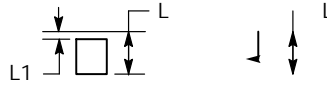
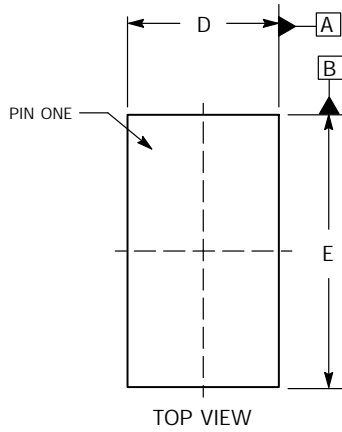


SCALE 2:1

QFN20 2.5x4.5, 0.5P
CASE 485FK
ISSUE 0

DATE 08 MAY 2017

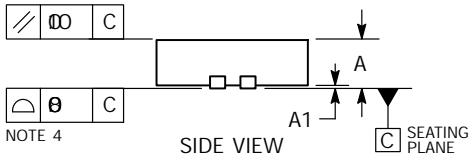


DETAIL A
ALTERNATE TERMINAL
CONSTRUCTIONS

- NOTES:
1. DIMENSIONING AND TOLERANCING PER ASME Y14.5M, 1994.
 2. CONTROLLING DIMENSION: MILLIMETERS.
 3. DIMENSIONS b APPLIES TO PLATED TERMINAL AND IS MEASURED BETWEEN 0.20 AND 0.25MM FROM THE TERMINAL TIP.
 4. COPLANARITY APPLIES TO THE EXPOSED PAD AS WELL AS THE TERMINALS.

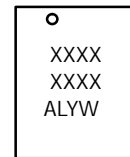
| DIM | MILLIMETERS | |
|-----|-------------|-----|
| | MIN | NOM |
| A | Ø | Ø |
| A1 | - | - |
| A3 | ØR | |
| b | Ø | Ø |

| | | |
|----|----|----|
| D1 | Ø | Ø |
| E | Ø | Ø |
| E1 | Ø | 3Ø |
| e | Ø | |
| K | ØR | |
| L | ØD | Ø |



NOTE 4

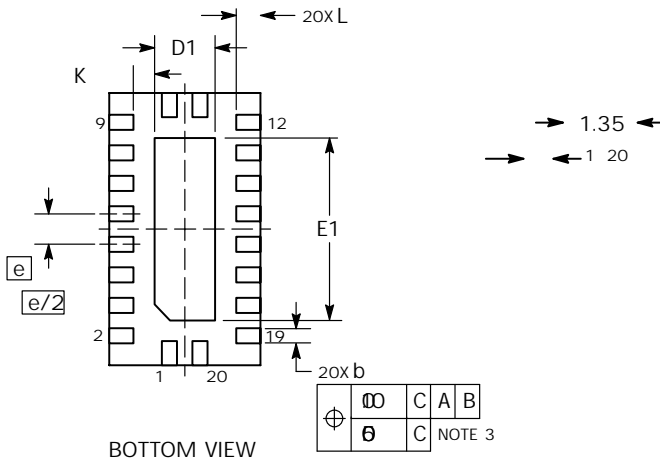
GENERIC MARKING
DIAGRAM*



- XXXX = Specific Device Code
- A = Assembly Location
- L = Wafer Lot
- Y = Year
- W = Work Week
- = Pb-free Package

(Note: Microdot may be in either location)

*This information is generic. Please refer to device data sheet for actual part marking. Pb-free indicator, G or microdot, may or may not be present. Some products may not follow the Generic Marking.



| | | | | |
|---|---|---|--------|---|
| Ø | Ø | C | A | B |
| | Ø | C | NOTE 3 | |

→ ←