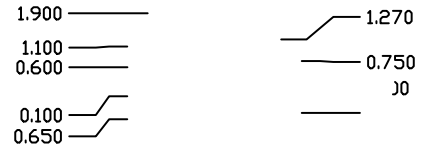
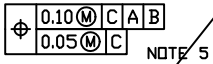
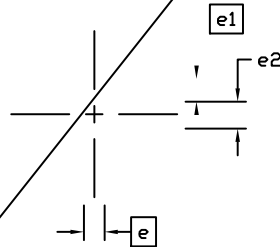
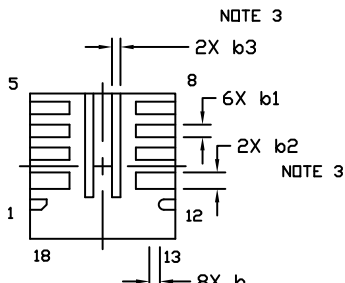
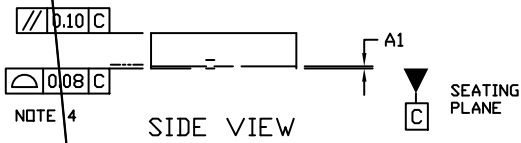
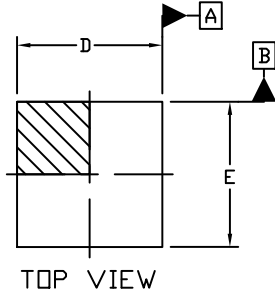


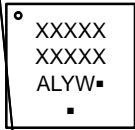
QFN18 3.5x3.5, 0.5P  
CASE 485FR  
ISSUE O

DATE 28 MAR 2018

PIN 1  
REFERENC



GENERIC  
MARKING DIAGRAM\*



- A = Assembly Location
- L = Wafer Lot
- Y = Year
- W = Work Week

(Note: Mi

\*This info

device data sheet for actual part marking.

Free indicator. Onsemi and its marks of Semiconductor Components Industries, LLC dba onsemi or its subsidiaries in the United States and/or other countries. onsemi reserves the right to make changes without notice to any products herein. onsemi makes no warranty, representation or guarantee regarding the suitability of its products for any particular purpose. onsemi does not assume any liability arising out of the application or use of any product or circuit, and specifically disclaims any and all liability, including without limitation special, consequential or incidental damages. onsemi does not convey any license under its patent rights nor the rights of others.

DOCUMENT NUMBER:	98AON84703G	Electronic versions are uncontrolled except when accessed directly from the Document Repository. Printed versions are uncontrolled except when stamped "CONTROLLED COPY" in red.
DESCRIPTION:	QFN18 3.5x3.5, 0.5P	PAGE 1 OF 1