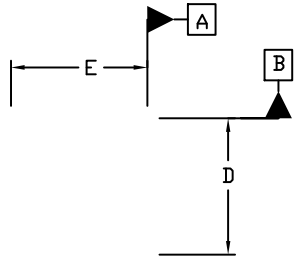




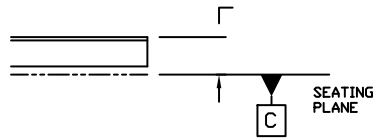
WLCSP4 1.00x1.00x0.30
CASE 567XG
ISSUE 0

DATE 02 JAN 2019



NOTES:

1. DIMENSIONING AND TOLERANCING PER ASME Y14.5M, 1994.
2. CONTROLLING DIMENSION: MILLIMETERS
3. DATUM THE SPHERICAL CROWNS OF THE SOLDER BALLS.



METERS

A2		
b	0.16	0.18
E		
e	0.40 BSC	

GENERIC MARKING DIAGRAM*



- X = Specific Device Code
- Y = Year
- W = Work Week

*This information is generic. Please refer to device data sheet for actual part marking. Pb free indicator, "G" or microdot "•", may or may not be present. Some products may not follow the Generic Marking.

RECOMMENDED MOUNTING FOOTPRINT