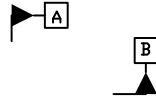


ODCSP69 5.545x5.565  
CASE 570BV  
ISSUE B

DATE 02 MAY 2018

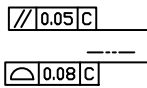


NOTES:

1. DIMENSIONING AND TOLERANCING PER ASME Y14.5M, 1994.
2. CONTROLLING DIMENSION: MILLIMETERS
3. DIMENSION *b* IS MEASURED AT THE MAXIMUM SOLDER BALL DIAMETER PARALLEL TO DATUM C.

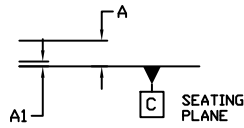
6. MAXIMUM ROTATION OF OPTICAL AREA WILL BE 0.1°. OPTICAL AREA IS DEFINED BY THE ACTIVE

TOP VIEW



NOTE 4

SIDE VIEW



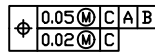
ERS		
∠2		
<i>b</i>	0.22	0.28
<i>E</i>		
<i>e</i>	0.66 BSC	

A1

PITCH

PITCH

BOTTOM VIEW



RECOMMENDED MOUNTING FOOTPRINT

PACKAGE OUTLINE