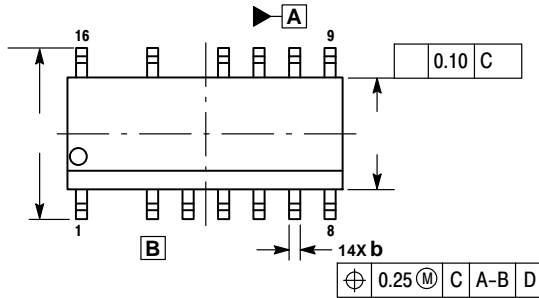


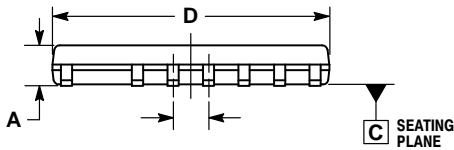
SCALE 1:1

**SOIC-16 NB MISSING PINS 2 AND 13**  
**CASE 751DU**  
**ISSUE O**

DATE 18 OCT 2013



DETAIL A



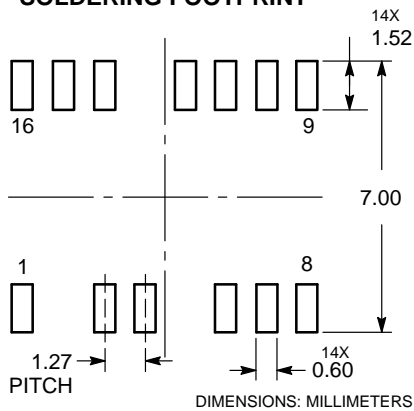
NOTES:

1. DIMENSIONING AND TOLERANCING PER ASME Y14.5M, 1994.
2. CONTROLLING DIMENSION: MILLIMETERS.
3. DIMENSION *b* DOES NOT INCLUDE DAMBAR PROTRUSION. ALLOWABLE PROTRUSION SHALL BE 0.10 mm IN EXCESS OF MAXIMUM MATERIAL CONDITION.
4. DIMENSIONS *D* AND *E* DO NOT INCLUDE MOLD FLASH, PROTRUSIONS OR GATE BURRS. MOLD FLASH, PROTRUSIONS OR GATE BURRS SHALL NOT EXCEED 0.25 mm PER SIDE. DIMENSIONS *D* AND *E* ARE DETERMINED AT DATUM *F*.
5. DIMENSIONS *A* AND *B* ARE TO BE DETERMINED AT DATUM *F*.
6. *A1* IS DEFINED AS THE VERTICAL DISTANCE FROM THE SEATING PLANE TO THE LOWEST POINT ON THE PACKAGE BODY.

| DIM       | MILLIMETERS |       |
|-----------|-------------|-------|
|           | MIN         | MAX   |
| <i>A</i>  | 1.35        | 1.75  |
| <i>A1</i> | 0.10        | 0.25  |
| <i>b</i>  | 0.35        | 0.49  |
| <i>c</i>  | 0.17        | 0.25  |
| <i>D</i>  | 9.80        | 10.00 |

|           |           |
|-----------|-----------|
| <i>e</i>  | 1.27 BSC  |
| <i>L</i>  | 0.40 1.27 |
| <i>L2</i> |           |

**SOLDERING FOOTPRINT**



XXXXX = Specific Device Code