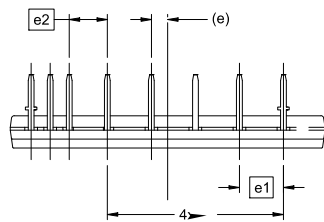


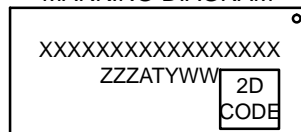


DIP39, 54.50x31.00x5.60, 1.78P
CASE MODGC
ISSUE B

DATE 21 DEC 2023



GENERIC
MARKING DIAGRAM*



- XXXXX = Specific Device Code
- ZZZ = Assembly Lot Code
- AT = Assembly & Test Location
- Y = Year
- WW = Work Week

*This information is generic. Please refer to device data sheet for actual part marking. Pb free indicator, "G" or microdot " ", may or may not be present. Some products may not follow the Generic Marking.